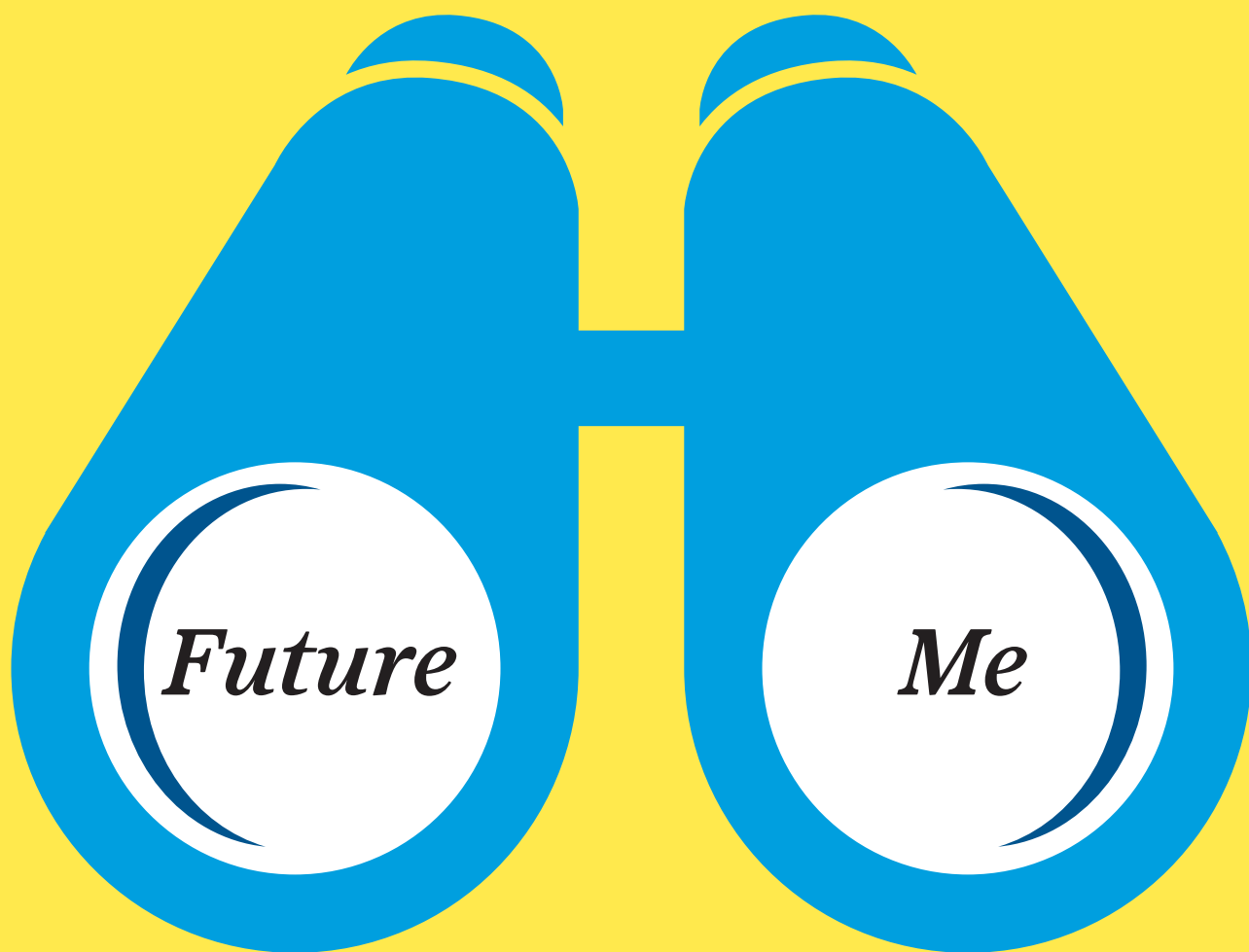


Future Me Patch: Caregiver Guide

This guide is to help you explore your Girl Scout's current and future interests so you can be a champion of their ambitions!



Current Me

Directive: Draw a picture of you doing a couple activities that you enjoy.

Reflection: Why do you enjoy those activities?

How do you feel when you are doing those activities?

Do you think someone could do this activity as part of their job?

Directive: Think about some of the places that you have lived or visited. Write or draw what you liked about those places.

Reflection: Was there anything you didn't like about those places?

Are there places that you would avoid?

Directive: Think about the people in your community that you look up to. Write or draw about what makes them special to you?

Reflection: Tell me more about what makes them special to you.

Do you think other people in the community find them special as well?

Does this have to do with the job that they have?

Directive: Describe what you do during your typical day and your perfect day.

Reflection: What is your morning routine?

Where do you go during the day and what do you do there?

If you had a choice, where would you go and who would go with you?

Future Me

Directive: Imagine it is 20 years from now—you are an adult! Draw a picture of the place where you live. Describe where it is in the world.

Reflection: Why is this house perfect for adult you?

How do you think you can get a home like this?

Directive: Draw a picture of future you! Include what you do and activities you do for fun.

Reflection: Tell me more about what you do. Does what you do connect to what you like now?

Directive: Describe what your day looks like as an adult. Write or draw about your favorite part of your day.

Reflection: Why is this your favorite part of your day?

Future Me (continued)

Directive: Let's brainstorm what you could do for a living when you are an adult.

- ▶ In this section, you are going to need to help your Girl Scout explore possible career pathways. A great place to start this exploration is the [MyColoradoJourney Career Exploration Tool](#).

Reflection: If you were to go to the library, what type of book would you choose to learn about something?

What is your favorite subject in school?

In this job, what type of things would you do?

What would you need to learn in school to prepare you for this?

Reflection

Complete this section with your Girl Scout.

- ▶ Are there things that came up more than once?
- ▶ Was there something you shared that was more important to you than the other things?
- ▶ What do you imagine you need to do to become the future you?

Just for caregivers: List some of your thoughts on how you can help your Girl Scout make her future ambitions come true.

All Girl Scouts who complete the Future Me Patch Program will receive this glow-in-the-dark patch for free!

Affix it to back of her uniform and, even at night, others will know she's on a journey to discover her Future Me.



Request your patch: https://gscolorado.formstack.com/forms/future_me_patch_request

Which CollegeInvest savings plan is right for you?

Join us in the Google classroom to learn more and receive your \$100 contribution:
<https://classroom.google.com/u/0/c/NTQ0Njc2ODA5NDA3?cjc=pahxrca>



You do everything you can to make sure they're ready. Choose a plan that best fits your specific needs. Do it now, before another year passes.

Direct Portfolio

This plan has age-based options that automatically shift allocations from more aggressive to more conservative investments as your child ages. Alternatively, allocations can be set to remain unchanged.

\$25 to open an account; enroll directly on-line at collegeinvest.org.

Stable Value Plus

This plan is designed to protect your principal investment. You are guaranteed to earn a 1.79% rate of return through December 2022. This guaranteed rate is reset every year, but will never drop below 1.5%.

\$25 to open an account; enroll directly on-line at collegeinvest.org.

Smart Choice

This plan is an FDIC-Insured investment option 4. There are two choices: a Money Market Savings and a 1-Year Time Savings Account.

No minimum to open an account; enroll directly on-line at collegeinvest.org.

Scholars Choice

This plan is a comprehensive, professionally managed plan available exclusively through financial professionals. The plan offers a range of enrollment year, target allocation and individual fund investment portfolios.

A financial advisor must enroll you in this plan. CollegeInvest can help you find one.

Got a younger sibling at home?

You may be eligible for the First Step and Matching Grant program through CollegeInvest.

Who is eligible: Any child born or adopted on or after January 1, 2020 in Colorado is eligible to receive a free \$100 contribution to a CollegeInvest 529 savings account. Visit collegeinvest.org/firststep or scan the QR code for details and apply.

And once you get started, CollegeInvest will match future contributions up to \$5,000.

